



# Research Networking Event

2<sup>nd</sup> April 2025



When you arrive, please put your name, role and organisation in the chat box



**Vicky Gilroy** | iHV Head of Innovation and Research  
**Dr Sharin Baldwin** | iHV Senior Health Visiting Research Lead  
**Dr Louisa Clifford-Taylor** | iHV Research Associate

# Welcome

On arrival, please add your name, role and organisation to the chat box



## Time for you - Enjoy!



## Share experiences and network

- Unmute yourself to engage in the discussions anytime. Please stay muted when you are not speaking to avoid background noises.
- We encourage you to have your camera on so we can connect with each other.
- Type questions in the chat box during the presentations. We can use these to shape discussions.



## Feedback

- Participate in the poll
- Contact [sharin.baldwin@ihv.org.uk](mailto:sharin.baldwin@ihv.org.uk)



# Agenda

**09:30 Welcome and introductions**

Vicky Gilroy | iHV Head of Innovation and Research

**09:35 Research presentation**

Inhabiting the Liminal Space: Exploring the Experiences of Parents of Preterm Multiples | Q&A

Dr Louisa Clifford-Taylor, Research Associate, iHV

**10:05 Workshop: Writing for Publication**

Associate Professor Liz Bailey, Director of the Elizabeth Bryan Multiple Births Centre, Birmingham Clare Slater-Robins

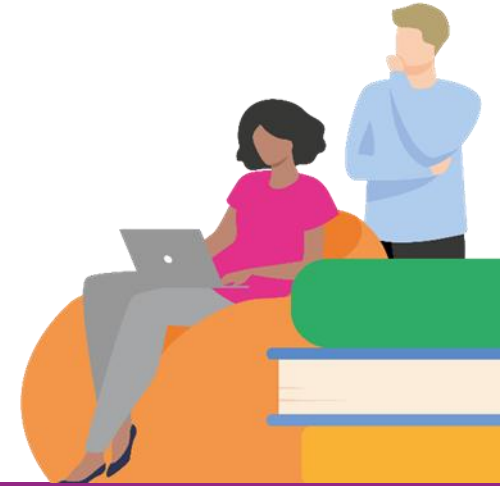
**10:40 Break**

**10:50 Workshop: Writing Exercise | followed by Q&A**

**11:20 AOB and close**



# Inhabiting the Liminal Space: Exploring the Experiences of Parents of Preterm Multiples



You can ask questions by using the chat function or simply raising your hand.

**Dr Louisa Clifford-Taylor,**

Research Associate, iHV

# Inhabiting the Liminal Space: Exploring the Experiences of Parents of Preterm Multiples

---

DR LOUISA CLIFFORD-TAYLOR

# My Background

---

Registered midwife

Registered health visitor

Funded GRTA opportunity at Birmingham City University

Research Associate at iHV

## Context

Around 60% of twins and almost all triplets are born before 37 weeks gestation and these account for approximately

15-20% of all admissions to neonatal units (NICE, 2011; Royal College of Obstetrics and Gynaecology, 2011).



## Research Design/Methods

Qualitative approach using grounded theory methodology

Thematic Analysis

Semi-structured, dyadic interviews

Photo-elicitation



# Summary of Findings

---

- A sense of 'otherness'
- Lack of control and agency
- Uncertainty



# Recommendations for practice

---

- **Sensitivity to Higher Support Needs**
- **Providing Evidence-Based Information**
- **Infant Feeding**
- **Signposting to Specialist Services**
- **Consistency in Care**
- **Promoting Parental Mental Health**

# Challenges

---



IDENTITY/BOUNDARIES



OVERWHELMED BY  
DATA



RESEARCHER  
SAFEGUARDING



PARTICIPANT  
ANONYMITY

# Considering Identity

---



---

# 'FAKING FRIENDSHIP'

(Duncome and Jessop, 2012)

*Negotiating the boundaries between  
novice researcher, health  
professional and parent.*

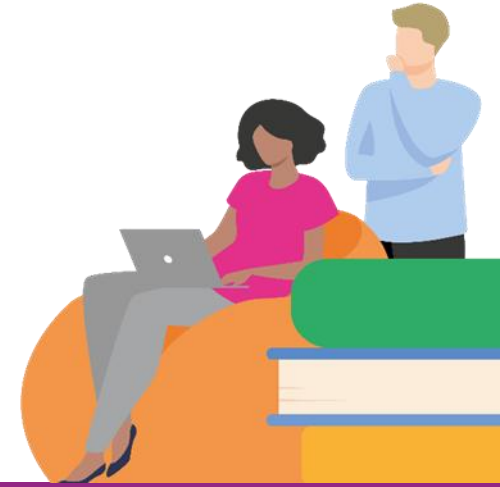


THANK YOU

# Q&A



# Workshop: Writing for Publication



You can ask questions by using the chat function or simply raising your hand.

## Associate Prof. Liz Bailey

Director of the Elizabeth Bryan Multiple Births Centre, Birmingham City University and Associate Editor for Midwifery and Women's Health, Evidence Based Nursing.

# How to publish

**Dr Elizabeth Bailey, Associate Professor, BCU**

THE  
ELIZABETH BRYAN  
Multiple Births Centre

---



THE  
ELIZABETH BRYAN  
Multiple Births Centre

# What I will talk about today

- Deciding what to write
- Deciding where to publish
- Barriers to writing
- Writing as a team
- Writing for publication
- Managing reviewer comments
- Sharing your work

(Disclaimer)



THE  
ELIZABETH BRYAN  
Multiple Births Centre

# Deciding what to write

- What do you want to say
- Size and shape of what you want to write
- What is your motivation to write?
  - Professional
  - Personal
  - Ethical
- Who is your audience?
- Do you need to write more than one thing?

# Deciding where to publish

- Look at articles you read or that are similar – where are they published?
- Check the journal scope and the style of papers it accepts – examples:
  - [BMJ](#)
  - [Birth](#)
  - [PHN](#)
- Standardised formats for writing – [PRISMA](#), [SQUIRE](#), [Consort](#),
- Tools (AI) to help you decide on journal - <https://journalfinder.elsevier.com/>
- Impact factors and journal metrics – how much do they matter?
- Open access considerations – how much will it cost? What is your funding model? What are your affiliations – [Open access network](#) information

# Barriers to writing

The perfect conditions to write are:

- Quiet
- Quiet diary
- Unlimited time
- Lighting
- Tea/Coffee
- Pen
- No background noise
- A rested mind



# Real word writing

- Before working day?
- First thing on a Monday?
- Last hour of the day?
- When a meeting gets cancelled?
- Framework – skeleton – notes to self – fill in the gaps
- Set own/group deadlines
- Pomodoro method
- Temporary blackout all comms
- [Forest: Focus for Productivity – Apps on Google Play](#)
- [25:00 - Time to focus!](#)

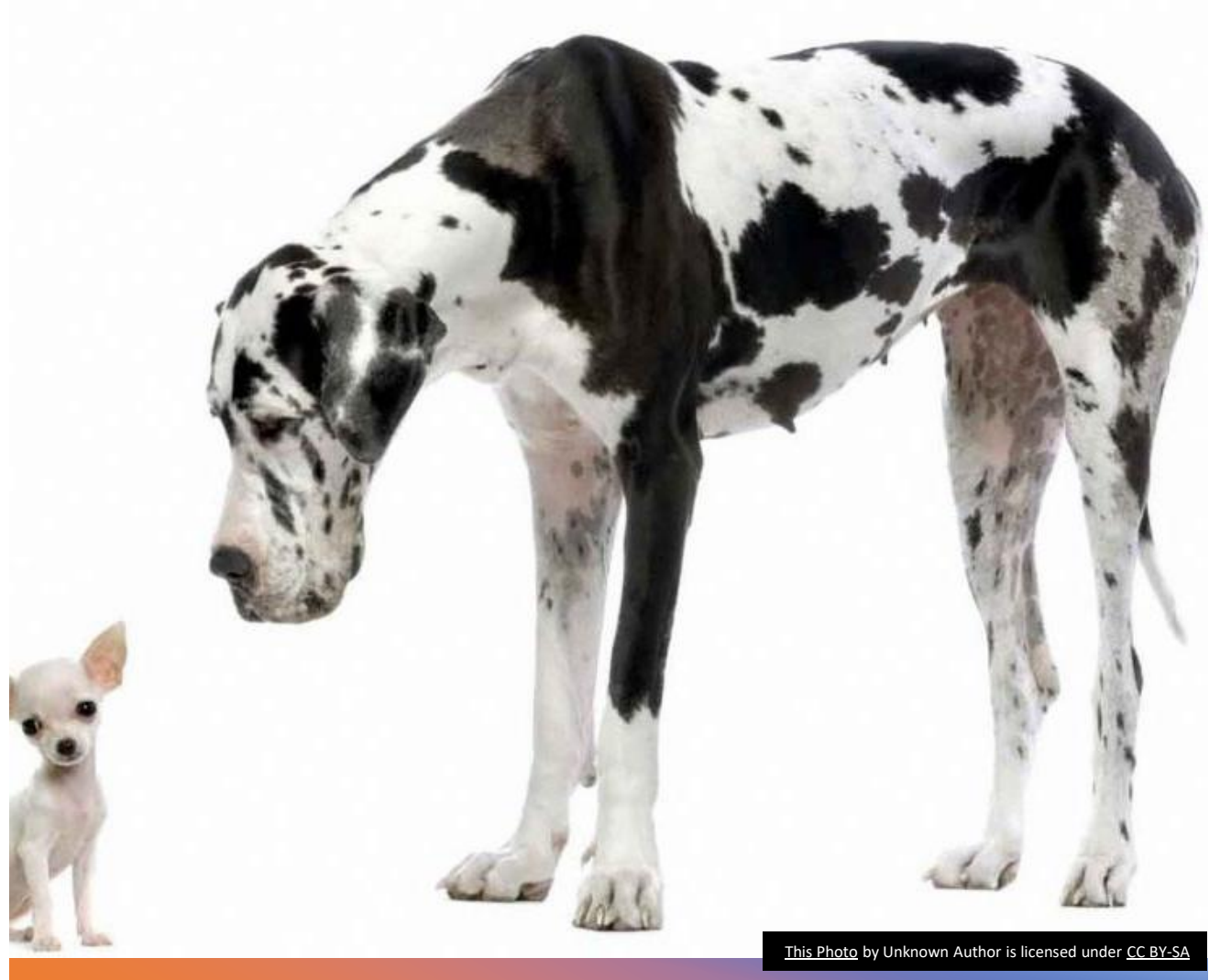


# The art of editing

You can't edit what you haven't written

- Write write write
- Micro, vs macro editing –

Always Macro first, then the micro level finally



This Photo by Unknown Author is licensed under [CC BY-SA](#)

# Writing as a team

---

- Good planning saves problems down the line
- Develop and agree a publication plan as far in advance as possible
- Address the sensitive issues early – who will be the lead author, what is the order of others and what is everyone's specific role or contribution? Draft your author recommendation statement first
- Apply the guidance: [ICMJE | Recommendations | Defining the Role of Authors and Contributors](#)
- Set clear timetables and deadlines
- Can be very rewarding and shares the burden
- Including PPI authors



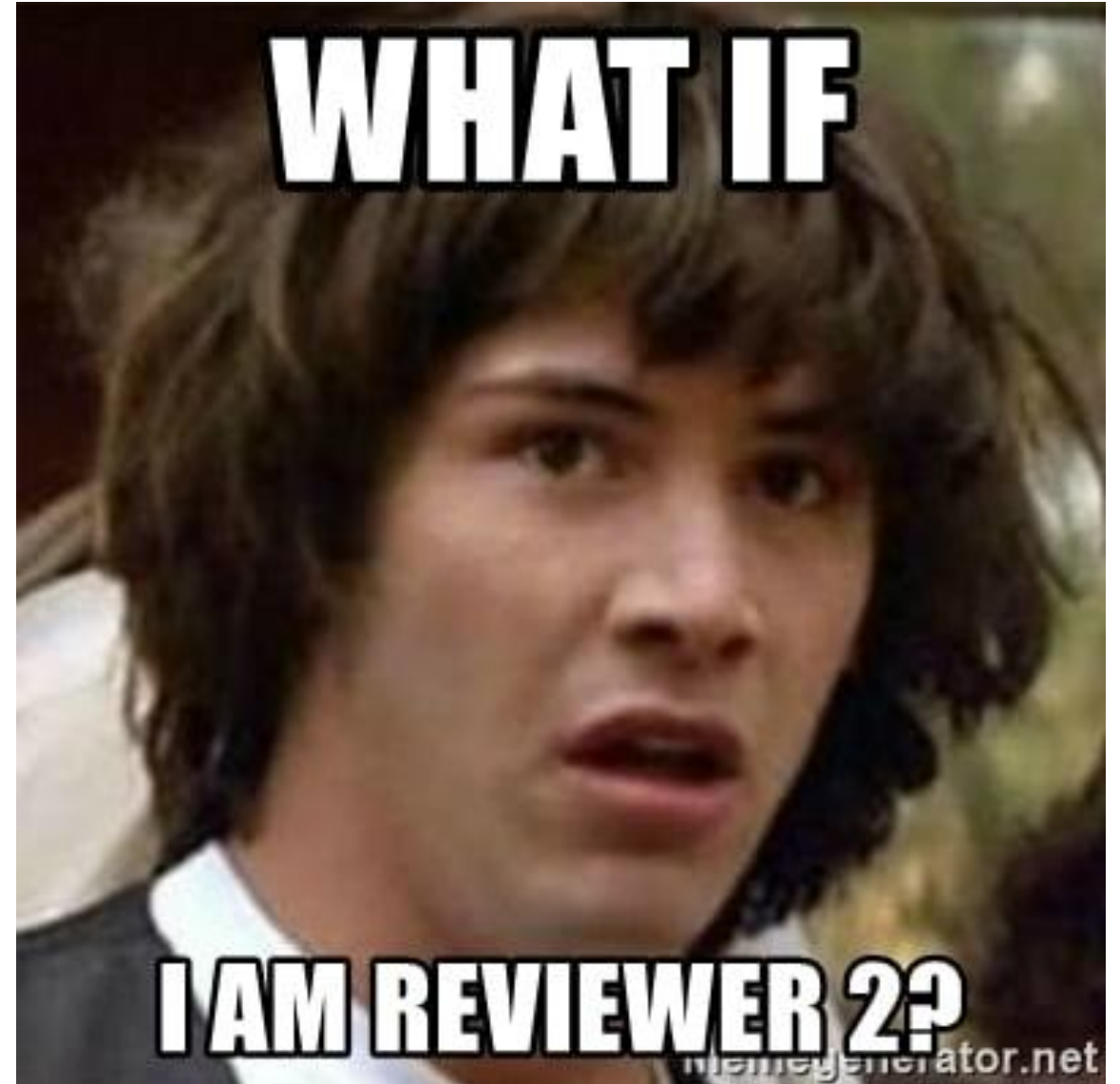
# Writing for publication

- This is your original content – preserve it – remember you may need a letter to the editor
- Do you need to think about REF?
  - Significance – national and international
    - Implications for research, education and practice
  - Originality – what does your paper add to what is known already? What is challenging, difficult or innovative about your work?
  - Rigour - could your methods be replicated? Strengths and limitations
- Review your own paper – or better yet ask a critical friend – [CASP tools](#)

# Managing reviewer comments

---

- Recognise the [vulnerability](#) that comes with sharing your work – let the emotions happen – then move on quickly!
- Create a document or table and list all the recommendations – then track corrections for resubmission. Follow the guidance!
- Review your paper (agree with team) and decide to accept or refute
- What did they miss? Didn't understand? Assumptions you made? – opportunities to make your paper clearer!
- What are you confident enough to refute – no-one knows your work/topic better than you.
- Try reviewing!
- ([A word on Imposter syndrome](#))



# Sharing your work

---

- Social media – with care – know your audience – potentially controversial?
- Talk to your comms department – media worthy? Early if possible
- iHV – and other professional networks
- Policy influence?
- Spin off – blogs? Podcasts?
- Track your [impact](#) – Researchgate, ORCID [Free Tools – Altmetric](#)
- Go beyond citations – follow up and ask?



# Consider writing for EBN

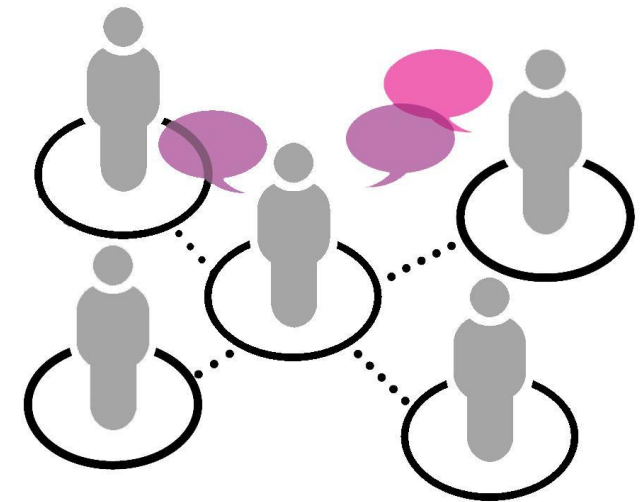
---

- [Write for us](#)
- [Guidelines for commentaries](#)



## Welcome back

Facilitators will be asked to feedback key discussion points when we return to the main session



# Workshop: Writing Exercise



You can ask questions by using the chat function or simply raising your hand.

## Associate Prof. Liz Bailey

Director of the Elizabeth Bryan Multiple Births Centre, Birmingham City University and Associate Editor for Midwifery and Women's Health, Evidence Based Nursing.

# Exercise – breakout activity

- What do you want to do with 30 mins?

## Options

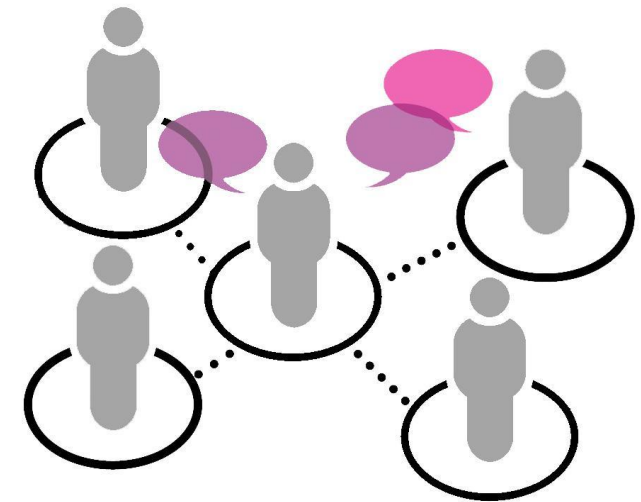
1. Find some potential journals – look at their scope, article type, word length, compare impact factors, open access status
2. Outline your article – main headings, fill in some blanks with bullet points
3. Macro edit existing draft – fresh eye – significance, originality, rigour
4. CASP review an existing draft
5. Watch [Brene Brown video](#) or read the blog on [imposter syndrome](#), try some of the online tools to support protected time
6. Think about driving the [impact](#) of your work

Come back and feedback what you did – did it feel productive?

# Facilitated Discussion

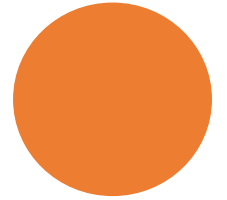
**You will now be directed to breakout rooms.**

Facilitators will be asked to feedback key discussion points when we return to the main session



- [www.bcu.ac.uk/ebmbc](http://www.bcu.ac.uk/ebmbc)
- [ebmbc | Twitter, Instagram, Facebook | Linktree](#)
- [multiple.births@bcu.ac.uk](mailto:multiple.births@bcu.ac.uk)
- [elizabeth.bailey@bcu.ac.uk](mailto:elizabeth.bailey@bcu.ac.uk)

We are based at Birmingham City University,  
City South Campus in Edgbaston.



THE  
**ELIZABETH BRYAN**  
Multiple Births Centre

# Q&A



# Updates

- **Research bulletin:** Jan, May, Sept
- **Collaboration form:** <https://ihv.org.uk/our-work/research/collaborate-on-a-research-study/>
- **Article published:** Feasibility and acceptability of the Alarm Distress Baby Scale (ADBB) in universal health visiting practice in England: a mixed-methods study using Normalisation Process Theory:  
<https://bmjpaedsopen.bmj.com/content/9/1/e002997>  
  
The iHV Champions training programme and its Theory of Change:  
<https://www.magonlinelibrary.com/doi/abs/10.12968/jfch.2025.2.3.144>
- **iHV Research pages:** <https://ihv.org.uk/our-work/research/>



# Opportunities to participate in research

## Research recruitment - Health visitors' perceptions, experiences, and practices when undertaking a new baby assessment at 10-14 days

Nicky Brown, a student in a Professional Doctorate Programme in Public Health at the School of Health and Social Care at the University of Essex, would like to invite you to take part in her research study.

This research aims to understand health visitors' perceptions, experiences, and practices when undertaking a new baby assessment at 10-14 days. Nicky is looking to recruit health visitors with more than one-year post-qualification experience who work in England but do not work inside of London.

The questions will focus on your reflection, experience, and views on undertaking the new baby assessment. The interviews will take place between April-May 2025, so **please respond to Nicky by 18 April 2025.**

Please contact Nicky on [nb20368@essex.ac.uk](mailto:nb20368@essex.ac.uk)



# Opportunities to participate in research

## Exploring the Psychological Impact of Caesarean Birth

This study is exploring mental health and bonding experiences in the first year after a caesarean birth and is being undertaken at King's College London in collaboration with the Institute of Health Visiting.

Michelle Anderson is looking to recruit women for this study to take part in an online [survey](#). Can you help disseminate this information with women who may be suitable (see participant information [here](#)).

For more information please contact: [michelle.4.anderson@kcl.ac.uk](mailto:michelle.4.anderson@kcl.ac.uk)

NIHR | School for Public Health Research  MRC Epidemiology Unit  UNIVERSITY OF CAMBRIDGE

## Are you a health visitor working in England?



We want to hear your experiences of working with new parents. This study aims to understand how we can support and promote health behaviours in new parents.

You will be reimbursed for your time (£50 Amazon voucher)

Sign up / more information:  
[FAM-HEALTH@mrc-epid.cam.ac.uk](mailto:FAM-HEALTH@mrc-epid.cam.ac.uk) / 07394 839191

Helen Little, University of Cambridge

Or click [here](#) to find out more



# Over to you

Help us to tailor our events to meet **your** needs!

- Submit your anonymised responses to the poll
- What more can we do to support you in your practice?

Email [events@ihv.org.uk](mailto:events@ihv.org.uk) with any suggestions

